

*"America's most innovative timing & technical services provider"*

## **MICROGATE REI 2 TIMER dual wireless (SF + SF2)**



### **ADDITIONAL INSTRUCTIONS 11-17-2010**

The REI2 timer has the capability of using 4 wireless transmitters simultaneously for dual course racing. The second radio channel (SF2 , silver decals) is input into the REI2 using the Computer A input. The SF channel is input using the small 4 pole connector as labeled.

The SF channel should be used for Skiers Right and the SF2 channel should be used for Skiers Left.

You have to have firmware in the REI2 dated after 9-15-2010 and NASTAR or Club software that lists the REI2 "wired or wireless" dated after 11-26-2010

---

***"America's most innovative timing & technical services provider"***

---

## USING THE REI 2 AS A TIME BASE WITH NASTAR 6.30 (CLUB 4.06 Rev 15 +)

- Connect the power adapter
- Connect the Dec radio to the timer first as the small connector is easier to view when no other cables are attached.
- Connect the REI 2 to the PC with the data cable
- Start the timer
- Select Synchronization "A"
- Go through the input of the hours, minutes, seconds
- Input the date DD, MM, YYYY
- New race "A"
- Clear configuration "A" really new race structure), Sure "Y"
- Press F5 "OTHER" to move to second menu.
- Select option "C" PC online
- Select "A" clear configuration if needed. You can keep the configuration once you have everything working the first time.
- Select "B" PC online with BIB numbers
- Inputs are as follows
- Red start to Green Start Banana socket - Channel 0 (STA button)
- Red Finish to Red Stop banana socket - Channel 15 (STO button)
- Blue Start to Yellow Lap Banana socket - Channel 1 (LAP button)
- Blue Finish to Blue Aux banana socket - Channel 16 (AUX button)
- 9600,n,8,1 default protocol
- Check the channel assignments in the software Setup and Test section to make sure the input mapping is correct.

## SECOND RADIO CHANNEL (SF2) FOR DUAL RACING

- The SF2 channel is controlled by the serial port settings on the REI2
- The Computer A port is for the SF2 radio
- The Computer B port is for the data cable to the PC
- The control of the serial (computer) port is handled in Menu+other+REI2 setup+Serial Ports setup+Serial A
- The PST setup for Dual wireless is Serial A = Radio In
- 1200
- Yes
- Yes

---

***"America's most innovative timing & technical services provider"***

---

- Disable
- Radio in
- Use the down arrow to move to the last option, Modify key to switch to Radio In
- Menu key to save and exit

#### CHANNEL ASSIGNMENTS FOR RADIOS

- SF ENC RADIO (DEFAULT) 500 (SKIERS RIGHT)
- SF2 ENC RADIO 516 (SKIERS LEFT)
- POLIFEMO SF PHOTOCELL (DEFAULT) 515 (SKIERS RIGHT)
- POLIFEMO SF2 PHOTOCELL 531 (SKIERS LEFT)
- 

#### USING THE REI 2 FOR AUTOMATIC TIMING FOR SKIING without software (standalone single course training)

- Turn on timer
  - Don't synchronize
  - Select "A" new race
  - Scroll around with F5 key until option "B" Modify basic Configuration appears
  - Select option "D" training (once set it will be Option "D" on the main menu.
  - This option automatically sets up the start and finish to just take sequential starts, time them, and display them. Bib numbers are really not important.
  - As many racers on course as it is safe.
  - You can input bibs if you want but they are not really important
- 
- A variation if you want to time with bib numbers using the Linkgate Encradio with Bib ID#
  - This mode you set up the timer in the regular Single Start-Alpine Ski mode.
  - Press ALT+F2 (run)
  - The Run number will flash.
  - Set to 0 followed by ENT
  - Press F5 + F3
  - Press F2

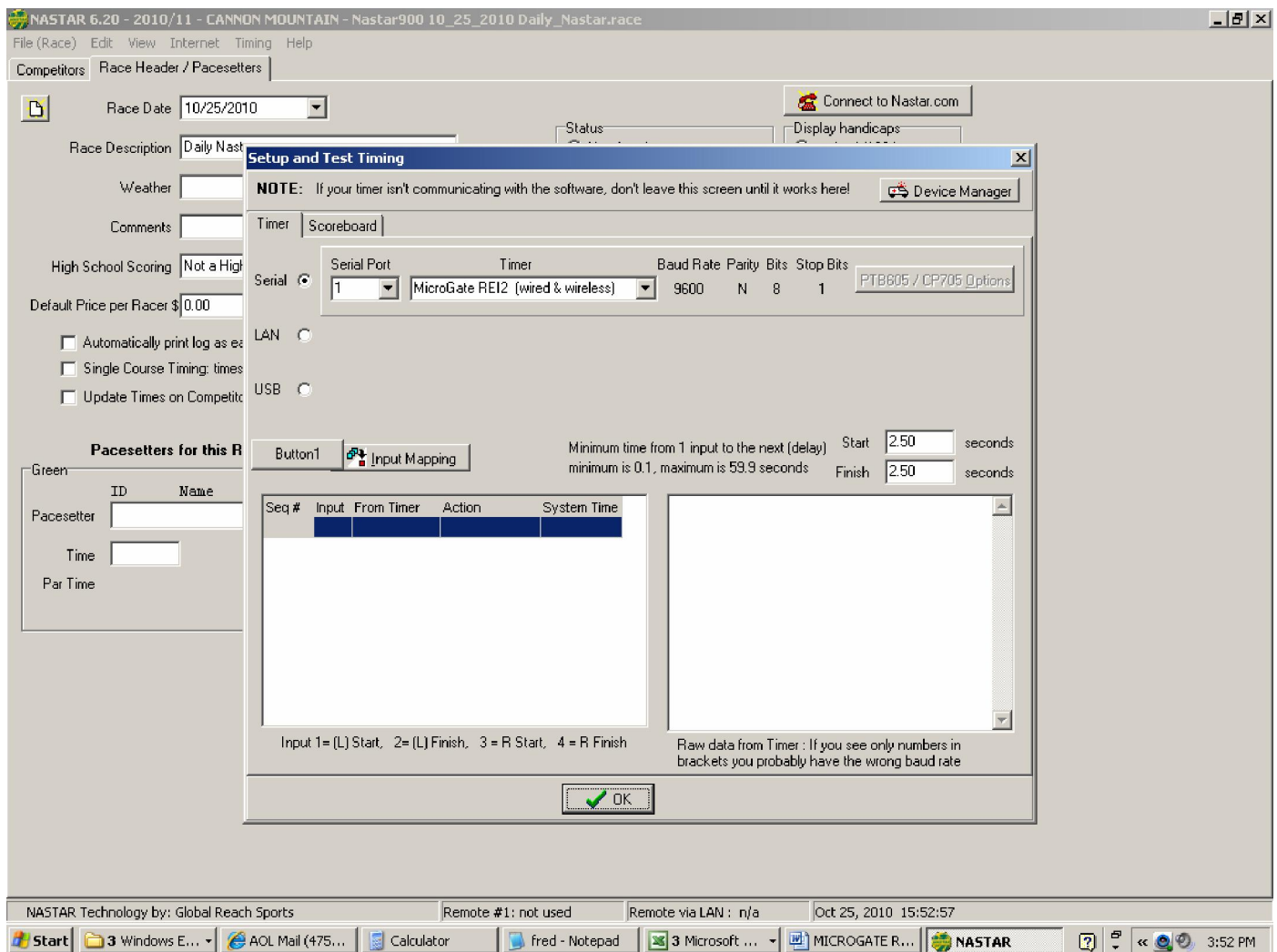
---

***"America's most innovative timing & technical services provider"***

---

- Change time for STOP to 0 followed by ENT
- Press ESC to get back to timing screen
- This mode can run automatically with no bib numbers. Use of the Linkgate Encradio will allow racers at the start to enter their bibs and the timer will keep track of them.
- You can also type in the bibs like a normal race. Every run will be recorded separately.
- You can print out the different runs later on under Ranking; ALT+F4

*"America's most innovative timing & technical services provider"*



Nastar screen shot with Microgate REI2 wired/wireless option

---

*"America's most innovative timing & technical services provider"*

---

## SUPPORT

- 1) The Phoenix Sports Technology discussion forum is a great place to start:
- 2) <http://www.timingguys.com/6/ubb.x> OR [www.timingguys.com](http://www.timingguys.com)
- 3) Fred Patton can be reached on his worldwide cell phone at 610-972-5385
- 4) The Microgate factory site has a great deal of information as well. You can download the latest manuals and brochures.
- 5) [http://www.microgate.it/eng/timing\\_sport/supporto.asp](http://www.microgate.it/eng/timing_sport/supporto.asp)